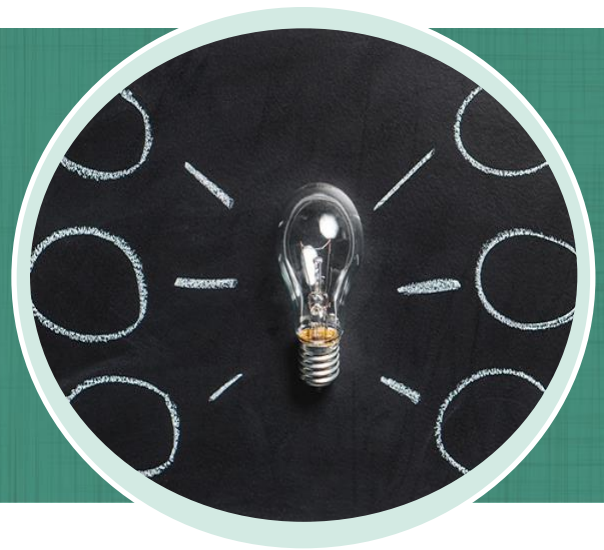


# Exploring Energy Storage in Your Community

Learner Worksheet  
Grade Level: 7-12



Name:

Group Members Names:

## Part 1: Hypothesize and Plan

1. What is the general focus of your Inquiry?

---

---

---

2. Why did your group choose this focus?

---

---

---

3. What is your Inquiry Question? (Note: this can be modified later if necessary)

---

---

---

4. What are your early thoughts on the next three steps of the Spiral Inquiry?

---

---

---

5. What additional help do you need from the educator?

---

---

---

**Part 2: Explore and Research**

1. What are three key facts about your Inquiry that you have discovered?

---

---

---

2. Does your group have a complete record of all your resources?

---

3. Does your Inquiry Question need to be modified?

---

4. What additional research is left?

---

---

---

5. What local experts are you thinking of consulting?

---

---

---

6. What additional help do you need from the educator?

---

---

---

**Part 3: Analyze and Check**

1. Have you sorted out your information?

---

2. What are the patterns you see when you analyze it (highlight two or three)?

---

---

3. What are one or more conclusions that you can draw from your data?

---

---

---

4. What are your early thoughts on the actions that can be taken in this area?

---

---

---

**5. How would you encapsulate the message your research in one or two sentences?**

---

---

---

**6. What additional help do you need from the educator?**

---

---

---